

Product datasheet for **TA311312**

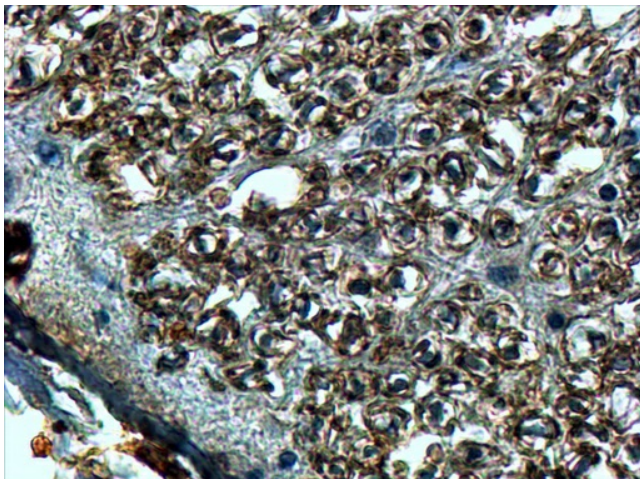
SLIT2 Goat Polyclonal Antibody

Product data:

Product Type:	Primary Antibodies
Applications:	IHC
Recommended Dilution:	ELISA: 1:1000. IHC: 4-8ug/ml
Reactivity:	Human (Expected from sequence similarity: Mouse, Rat, Dog)
Host:	Goat
Clonality:	Polyclonal
Immunogen:	Peptide with sequence DDCQDNKCKNGAH, from the internal region of the protein sequence according to NP_004778.1.
Formulation:	Supplied at 0.5 mg/ml in Tris saline, 0.02% sodium azide, pH7.3 with 0.5% bovine serum albumin. Aliquot and store at -20C. Minimize freezing and thawing.
Concentration:	lot specific
Purification:	Purified from goat serum by ammonium sulphate precipitation followed by antigen affinity chromatography using the immunizing peptide.
Conjugation:	Unconjugated
Storage:	Store at -20°C as received.
Stability:	Stable for 12 months from date of receipt.
Gene Name:	slit guidance ligand 2
Database Link:	NP_004778 Entrez Gene 20563 Mouse Entrez Gene 360272 Rat Entrez Gene 595148 Dog Entrez Gene 9353 Human O94813
Synonyms:	SLIL3; Slit-2
Note:	IHC: In paraffin embedded Human Spinal Cord shows staining of the cellular membrane in the bundles of sensory fibres.
Protein Families:	Druggable Genome, Secreted Protein
Protein Pathways:	Axon guidance



[View online »](#)

Product images:

TA311312 (4ug/ml) staining of paraffin embedded Human Spinal Cord. Steamed antigen retrieval with Tris/EDTA buffer pH 9, HRP-staining.