

Product datasheet for **TA311307**

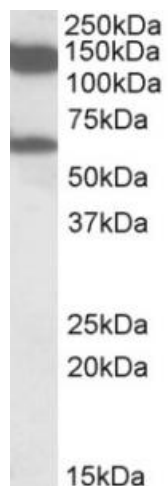
MIIt10 Goat Polyclonal Antibody

Product data:

Product Type:	Primary Antibodies
Applications:	WB
Recommended Dilution:	WB: 1-3ug/ml
Reactivity:	Rat (Expected from sequence similarity: Human, Mouse, Dog, Cow)
Host:	Goat
Clonality:	Polyclonal
Immunogen:	Peptide with sequence C-RLEDTTARFTNAN, from the internal region of the protein sequence according to NP_004632.1; NP_001009569.1.
Formulation:	Supplied at 0.5 mg/ml in Tris saline, 0.02% sodium azide, pH7.3 with 0.5% bovine serum albumin. Aliquot and store at -20C. Minimize freezing and thawing.
Concentration:	lot specific
Purification:	Purified from goat serum by ammonium sulphate precipitation followed by antigen affinity chromatography using the immunizing peptide.
Conjugation:	Unconjugated
Storage:	Store at -20°C as received.
Stability:	Stable for 12 months from date of receipt.
Gene Name:	myeloid/lymphoid or mixed-lineage leukemia; translocated to, 10
Database Link:	NP_001012162 Entrez Gene 8028 Human Entrez Gene 17354 Mouse Entrez Gene 487096 Dog Entrez Gene 361285 Rat
Synonyms:	AF10; DKFZp686E10210; MGC75086



[View online »](#)

Product images:

(1ug/ml) staining of Rat Testis lysate (35ug protein in RIPA buffer). Primary incubation was 1 hour. Detected by chemiluminescence.