

## Product datasheet for **TA311305**

### NDUFS6 Goat Polyclonal Antibody

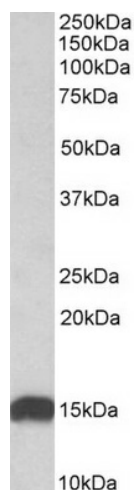
#### Product data:

Product Type:	Primary Antibodies
Applications:	WB
Recommended Dilution:	WB: 0.01-0.03 µg/ml.
Reactivity:	Human, Mouse, Rat (Expected from sequence similarity: Dog, Cow)
Host:	Goat
Clonality:	Polyclonal
Immunogen:	Peptide with sequence C-RIRFVGRQKEVNEN, from the internal region of the protein sequence according to NP_004544.1.
Formulation:	Supplied at 0.5 mg/ml in Tris saline, 0.02% sodium azide, pH7.3 with 0.5% bovine serum albumin. Aliquot and store at -20C. Minimize freezing and thawing.
Concentration:	lot specific
Purification:	Purified from goat serum by ammonium sulphate precipitation followed by antigen affinity chromatography using the immunizing peptide.
Conjugation:	Unconjugated
Storage:	Store at -20°C as received.
Stability:	Stable for 12 months from date of receipt.
Gene Name:	NADH:ubiquinone oxidoreductase subunit S6
Database Link:	<a href="#">NP_004544</a> <a href="#">Entrez Gene 29478 Rat</a> <a href="#">Entrez Gene 407785 Mouse</a> <a href="#">Entrez Gene 478629 Dog</a> <a href="#">Entrez Gene 4726 Human</a> <a href="#">O75380</a>
Synonyms:	CI-13kA; CI-13kD-A; CI13KDA
Protein Pathways:	Alzheimer's disease, Huntington's disease, Metabolic pathways, Oxidative phosphorylation, Parkinson's disease

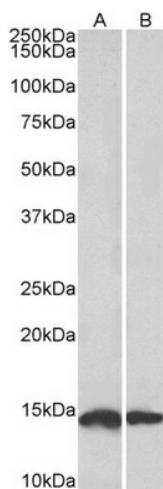


[View online »](#)

## Product images:



TA311305 (0.01 ug/ml) staining of Human Heart lysate (35 ug protein in RIPA buffer). Primary incubation was 1 hour. Detected by chemiluminescence.



TA311305 (0.1 ug/ml) staining of Mouse (A) and Rat (B) Heart lysates (35 ug protein in RIPA buffer). Primary incubation was 1 hour. Detected by chemiluminescence.