

Product datasheet for **TA311298**

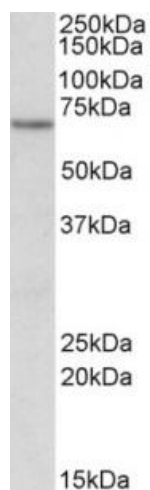
ETFDH Goat Polyclonal Antibody

Product data:

Product Type:	Primary Antibodies
Applications:	WB
Recommended Dilution:	WB: 1-3ug/ml
Reactivity:	Human, Mouse, Rat (Expected from sequence similarity: Dog, Cow, Rabbit)
Host:	Goat
Clonality:	Polyclonal
Immunogen:	Peptide with sequence C-EHDQPAHLTLRD, from the internal region of the protein sequence according to NP_004444.2.
Formulation:	Supplied at 0.5 mg/ml in Tris saline, 0.02% sodium azide, pH7.3 with 0.5% bovine serum albumin. Aliquot and store at -20C. Minimize freezing and thawing.
Concentration:	lot specific
Purification:	Purified from goat serum by ammonium sulphate precipitation followed by antigen affinity chromatography using the immunizing peptide.
Conjugation:	Unconjugated
Storage:	Store at -20°C as received.
Stability:	Stable for 12 months from date of receipt.
Gene Name:	electron transfer flavoprotein dehydrogenase
Database Link:	NP_004444 Entrez Gene 66841 Mouse Entrez Gene 295143 Rat Entrez Gene 475480 Dog Entrez Gene 2110 Human Q16134
Synonyms:	ETFQO; MADD



[View online »](#)

Product images:

(1ug/ml) staining of Human Kidney lysate (35ug protein in RIPA buffer). Primary incubation was 1 hour. Detected by chemiluminescence.