

## Product datasheet for **TA311297**

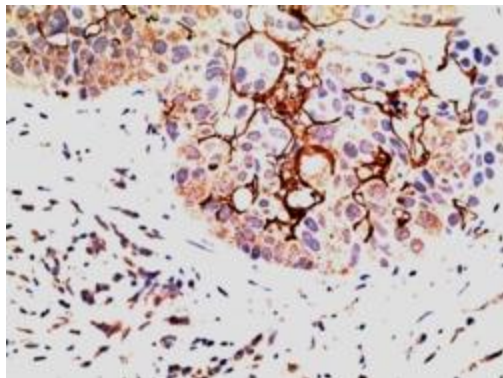
### EPS8 Goat Polyclonal Antibody

#### Product data:

Product Type:	Primary Antibodies
Applications:	IHC
Recommended Dilution:	WB: 1ug/ml, IHC: 5-10ug/ml
Reactivity:	Expected from sequence similarity: Human, Mouse, Rat, Dog, Pig
Host:	Goat
Clonality:	Polyclonal
Immunogen:	Peptide with sequence C-SGVESFDEGSSH, from the C Terminus of the protein sequence according to NP_004438.3.
Formulation:	Supplied at 0.5 mg/ml in Tris saline, 0.02% sodium azide, pH7.3 with 0.5% bovine serum albumin. Aliquot and store at -20C. Minimize freezing and thawing.
Concentration:	lot specific
Purification:	Purified from goat serum by ammonium sulphate precipitation followed by antigen affinity chromatography using the immunizing peptide.
Conjugation:	Unconjugated
Storage:	Store at -20°C as received.
Stability:	Stable for 12 months from date of receipt.
Gene Name:	epidermal growth factor receptor pathway substrate 8
Database Link:	<a href="#">NP_004438</a> <a href="#">Entrez Gene 13860 Mouse</a> <a href="#">Entrez Gene 312812 Rat</a> <a href="#">Entrez Gene 477686 Dog</a> <a href="#">Entrez Gene 2059 Human</a> <a href="#">Q12929</a>
Synonyms:	DFNB102
Protein Families:	Druggable Genome



[View online »](#)

**Product images:**

(5ug/ml) staining of paraffin embedded Human Breast Carcinoma. Steamed antigen retrieval with citrate buffer pH 6, AP-staining.