

Product datasheet for **TA311295**

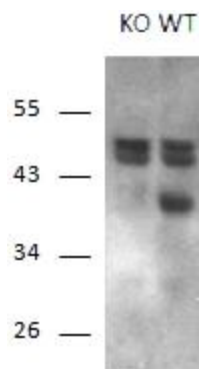
Rcan1 Goat Polyclonal Antibody

Product data:

Product Type:	Primary Antibodies
Applications:	WB
Recommended Dilution:	WB: 1-3ug/ml
Reactivity:	Mouse (Expected from sequence similarity: Human, Rat, Dog, Cow)
Host:	Goat
Clonality:	Polyclonal
Immunogen:	Peptide with sequence C-HIGSSHLAPPNPD, from the internal region of the protein sequence according to NP_004405.3; NP_981962.1; NP_981963.1.
Formulation:	Supplied at 0.5 mg/ml in Tris saline, 0.02% sodium azide, pH7.3 with 0.5% bovine serum albumin. Aliquot and store at -20C. Minimize freezing and thawing.
Concentration:	lot specific
Purification:	Purified from goat serum by ammonium sulphate precipitation followed by antigen affinity chromatography using the immunizing peptide.
Conjugation:	Unconjugated
Storage:	Store at -20°C as received.
Stability:	Stable for 12 months from date of receipt.
Gene Name:	regulator of calcineurin 1
Database Link:	NP_062339 Entrez Gene 1827 Human Entrez Gene 266766 Rat Entrez Gene 607887 Dog Entrez Gene 54720 Mouse Q9JHG6
Synonyms:	Adapt78; CSP1; DSC1; DSCR1; MCIP1; RCN1



[View online »](#)

Product images:

(1ug/ml) staining of Mouse Brain and KO Mouse Brain lysates (35ug protein in RIPA buffer). Primary incubation was 1 hour. Detected by chemiluminescence.