

Product datasheet for **TA311286**

Rrad Goat Polyclonal Antibody

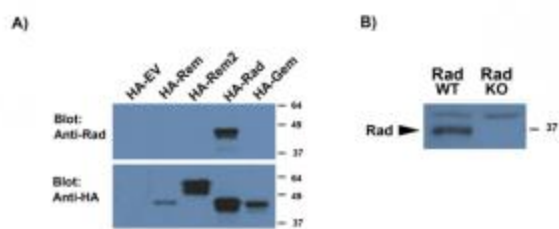
Product data:

Product Type:	Primary Antibodies
Applications:	WB
Recommended Dilution:	WB: 0.5-2ug/ml
Reactivity:	Mouse (Expected from sequence similarity: Human, Rat, Dog, Pig, Cow)
Host:	Goat
Clonality:	Polyclonal
Immunogen:	Peptide with sequence C-HRRSMPVDERDLQ, from the internal region of the protein sequence according to NP_004156.1.
Formulation:	Supplied at 0.5 mg/ml in Tris saline, 0.02% sodium azide, pH7.3 with 0.5% bovine serum albumin. Aliquot and store at -20C. Minimize freezing and thawing.
Concentration:	lot specific
Purification:	Purified from goat serum by ammonium sulphate precipitation followed by antigen affinity chromatography using the immunizing peptide.
Conjugation:	Unconjugated
Storage:	Store at -20°C as received.
Stability:	Stable for 12 months from date of receipt.
Gene Name:	Ras-related associated with diabetes
Database Link:	NP_062636 Entrez Gene 6236 Human Entrez Gene 83521 Rat Entrez Gene 611304 Dog Entrez Gene 56437 Mouse
Synonyms:	RAD; RAD1; REM3



[View online »](#)

Product images:



a) TA311286 (0.5ug/ml) staining of HEK293 lysates overexpressing several HA-tagged Mouse GTPases, including Rad (10ug protein in RIPA buffer) and compared with an HA-specific antibody. b) TA311286 (0.5ug/ml) staining of WT and KO lysates of Mouse Heart (100ug protein in RIPA buffer). Primary incubation was 1 hour. Detected by chemiluminescence.