

Product datasheet for **TA311285**

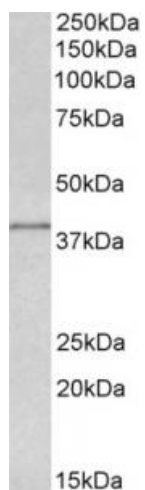
IDH3G Goat Polyclonal Antibody

Product data:

Product Type:	Primary Antibodies
Applications:	WB
Recommended Dilution:	WB: 0.5-2ug/ml
Reactivity:	Human, Mouse, Rat (Expected from sequence similarity: Dog, Pig, Cow)
Host:	Goat
Clonality:	Polyclonal
Immunogen:	Peptide with sequence C-DHLKLHSYATSIRK, from the internal region of the protein sequence according to NP_004126.1; NP_777358.1.
Formulation:	Supplied at 0.5 mg/ml in Tris saline, 0.02% sodium azide, pH7.3 with 0.5% bovine serum albumin. Aliquot and store at -20C. Minimize freezing and thawing.
Concentration:	lot specific
Purification:	Purified from goat serum by ammonium sulphate precipitation followed by antigen affinity chromatography using the immunizing peptide.
Conjugation:	Unconjugated
Storage:	Store at -20°C as received.
Stability:	Stable for 12 months from date of receipt.
Gene Name:	isocitrate dehydrogenase 3 (NAD(+)) gamma
Database Link:	NP_004126 Entrez Gene 15929 Mouse Entrez Gene 25179 Rat Entrez Gene 481081 Dog Entrez Gene 3421 Human P51553
Synonyms:	H-IDHG
Protein Pathways:	Citrate cycle (TCA cycle), Metabolic pathways



[View online »](#)

Product images:

(0.5ug/ml) staining of MCF7 lysate (35ug protein in RIPA buffer). Primary incubation was 1 hour. Detected by chemiluminescence.