

Product datasheet for **TA311282**

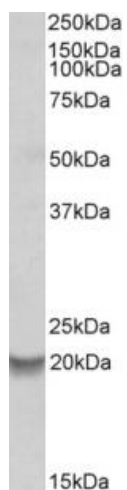
BCL2A1 Goat Polyclonal Antibody

Product data:

Product Type:	Primary Antibodies
Applications:	WB
Recommended Dilution:	WB: 0.1-0.3ug/ml
Reactivity:	Human (Expected from sequence similarity: Dog, Cow, Pig)
Host:	Goat
Clonality:	Polyclonal
Immunogen:	Peptide with sequence C-NVVSVDTART, from the internal region of the protein sequence according to NP_004040.1; NP_001108207.1.
Formulation:	Supplied at 0.5 mg/ml in Tris saline, 0.02% sodium azide, pH7.3 with 0.5% bovine serum albumin. Aliquot and store at -20C. Minimize freezing and thawing.
Concentration:	lot specific
Purification:	Purified from goat serum by ammonium sulphate precipitation followed by antigen affinity chromatography using the immunizing peptide.
Conjugation:	Unconjugated
Storage:	Store at -20°C as received.
Stability:	Stable for 12 months from date of receipt.
Gene Name:	BCL2 related protein A1
Database Link:	NP_004040 Entrez Gene 488770 Dog Entrez Gene 597 Human Q16548
Synonyms:	ACC-1; ACC-2; ACC1; ACC2; BCL2L5; BFL1; GRS; HBPA1
Protein Families:	Druggable Genome
Protein Pathways:	Metabolic pathways



[View online »](#)

Product images:

TA311282 (0.2ug/ml) staining of Human Bone Marrow lysate (35ug protein in RIPA buffer). Primary incubation was 1 hour. Detected by chemiluminescence.