

Product datasheet for **TA311277**

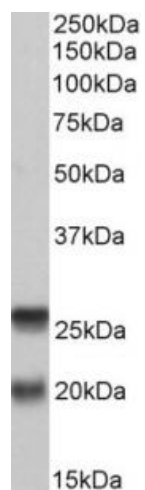
SNAP23 Goat Polyclonal Antibody

Product data:

Product Type:	Primary Antibodies
Applications:	WB
Recommended Dilution:	WB: 0.2-0.6ug/ml
Reactivity:	Human (Expected from sequence similarity: Mouse, Rat, Dog, Cow, Rabbit)
Host:	Goat
Clonality:	Polyclonal
Immunogen:	Peptide with sequence C-TDKADTNRDR, from the C Terminus of the protein sequence according to NP_003816.2; NP_570710.1.
Formulation:	Supplied at 0.5 mg/ml in Tris saline, 0.02% sodium azide, pH7.3 with 0.5% bovine serum albumin. Aliquot and store at -20C. Minimize freezing and thawing.
Concentration:	lot specific
Purification:	Purified from goat serum by ammonium sulphate precipitation followed by antigen affinity chromatography using the immunizing peptide.
Conjugation:	Unconjugated
Storage:	Store at -20°C as received.
Stability:	Stable for 12 months from date of receipt.
Gene Name:	synaptosome associated protein 23kDa
Database Link:	NP_003816 Entrez Gene 20619 Mouse Entrez Gene 64630 Rat Entrez Gene 478268 Dog Entrez Gene 8773 Human O00161
Synonyms:	HsT17016; SNAP-23; SNAP23A; SNAP23B
Protein Families:	Druggable Genome
Protein Pathways:	SNARE interactions in vesicular transport



[View online »](#)

Product images:

(0.2ug/ml) staining of PBMC lysate (35ug protein in RIPA buffer). Primary incubation was 1 hour. Detected by chemiluminescence.