

Product datasheet for **TA311273**

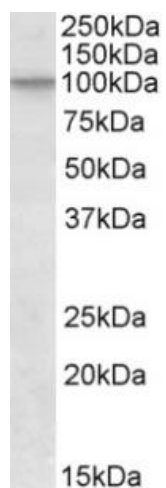
Cul2 Goat Polyclonal Antibody

Product data:

Product Type:	Primary Antibodies
Applications:	WB
Recommended Dilution:	WB: 1-3ug/ml
Reactivity:	Mouse (Expected from sequence similarity: Human, Rat, Dog, Cow)
Host:	Goat
Clonality:	Polyclonal
Immunogen:	Peptide with sequence C-QYIERSQASADE, from the C Terminus of the protein sequence according to NP_003582.2.
Formulation:	Supplied at 0.5 mg/ml in Tris saline, 0.02% sodium azide, pH7.3 with 0.5% bovine serum albumin. Aliquot and store at -20C. Minimize freezing and thawing.
Concentration:	lot specific
Purification:	Purified from goat serum by ammonium sulphate precipitation followed by antigen affinity chromatography using the immunizing peptide.
Conjugation:	Unconjugated
Storage:	Store at -20°C as received.
Stability:	Stable for 12 months from date of receipt.
Gene Name:	cullin 2
Database Link:	NP_083678 Entrez Gene 8453 Human Entrez Gene 361258 Rat Entrez Gene 477952 Dog Entrez Gene 71745 Mouse Q9D4H8
Synonyms:	CUL-2; MGC131970; OTTHUMP00000019437



[View online »](#)

Product images:

(1ug/ml) staining of NIH3T3 lysate (35ug protein in RIPA buffer). Primary incubation was 1 hour. Detected by chemiluminescence.