

Product datasheet for **TA311271**

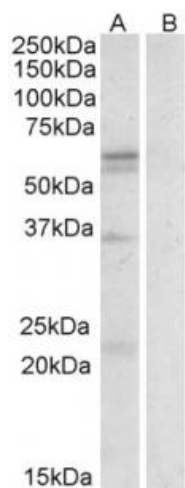
SLC7A5 Goat Polyclonal Antibody

Product data:

| | |
|-----------------------|---|
| Product Type: | Primary Antibodies |
| Applications: | WB |
| Recommended Dilution: | WB: 1-3ug/ml |
| Reactivity: | Human (Expected from sequence similarity: Dog) |
| Host: | Goat |
| Clonality: | Polyclonal |
| Immunogen: | Peptide with sequence C-RHRKPELERPIKVN, from the internal region of the protein sequence according to NP_003477.4. |
| Formulation: | Supplied at 0.5 mg/ml in Tris saline, 0.02% sodium azide, pH7.3 with 0.5% bovine serum albumin. Aliquot and store at -20C. Minimize freezing and thawing. |
| Concentration: | lot specific |
| Purification: | Purified from goat serum by ammonium sulphate precipitation followed by antigen affinity chromatography using the immunizing peptide. |
| Conjugation: | Unconjugated |
| Storage: | Store at -20°C as received. |
| Stability: | Stable for 12 months from date of receipt. |
| Gene Name: | solute carrier family 7 member 5 |
| Database Link: | NP_003477 Entrez Gene 489667 Dog Entrez Gene 8140 Human Q01650 |
| Synonyms: | 4F2LC; CD98; D16S469E; E16; hLAT1; LAT1; MPE16 |
| Protein Families: | Druggable Genome, Transmembrane |



[View online »](#)

Product images:

(0.3ug/ml) staining of Human Spleen lysate (35ug protein in RIPA buffer) with (B) and without (A) blocking with the immunising peptide. Primary incubation was 1 hour. Detected by chemiluminescence.