

## Product datasheet for **TA311270**

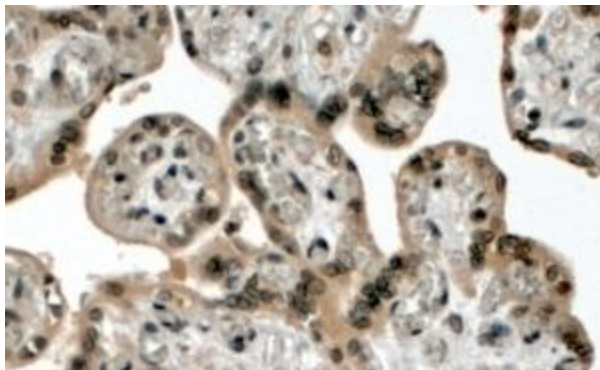
### KMT2D Goat Polyclonal Antibody

#### Product data:

Product Type:	Primary Antibodies
Applications:	IHC
Recommended Dilution:	WB: 0.1ug/ml, IHC: 4-8ug/ml
Reactivity:	Human
Host:	Goat
Clonality:	Polyclonal
Immunogen:	Peptide with sequence DSQNLAGEDKDSQ-C, from the N Terminus of the protein sequence according to NP_003473.3.
Formulation:	Supplied at 0.5 mg/ml in Tris saline, 0.02% sodium azide, pH7.3 with 0.5% bovine serum albumin. Aliquot and store at -20C. Minimize freezing and thawing.
Concentration:	lot specific
Purification:	Purified from goat serum by ammonium sulphate precipitation followed by antigen affinity chromatography using the immunizing peptide.
Conjugation:	Unconjugated
Storage:	Store at -20°C as received.
Stability:	Stable for 12 months from date of receipt.
Gene Name:	lysine methyltransferase 2D
Database Link:	<a href="#">NP_003473</a> <a href="#">Entrez Gene 8085 Human</a> <a href="#">O14686</a>
Synonyms:	AAD10; ALR; CAGL114; KABUK1; KMS; MLL2; MLL4; TNRC21
Protein Families:	Druggable Genome



[View online »](#)

**Product images:**

(4ug/ml) staining of paraffin embedded Human Placenta. Steamed antigen retrieval with citrate buffer pH 6, HRP-staining.