

## Product datasheet for **TA311263**

### CRISP2 Goat Polyclonal Antibody

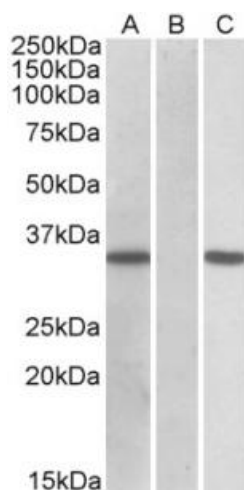
#### Product data:

Product Type:	Primary Antibodies
Applications:	WB
Recommended Dilution:	WB: 0.05-0.1ug/ml
Reactivity:	Expected from sequence similarity: Human, Pig, Dog, Cow
Host:	Goat
Clonality:	Polyclonal
Immunogen:	Peptide with sequence KCTLQHSDPEDRK, from the internal region of the protein sequence according to NP_003287.1.
Formulation:	Supplied at 0.5 mg/ml in Tris saline, 0.02% sodium azide, pH7.3 with 0.5% bovine serum albumin. Aliquot and store at -20C. Minimize freezing and thawing.
Concentration:	lot specific
Purification:	Purified from goat serum by ammonium sulphate precipitation followed by antigen affinity chromatography using the immunizing peptide.
Conjugation:	Unconjugated
Storage:	Store at -20°C as received.
Stability:	Stable for 12 months from date of receipt.
Gene Name:	cysteine rich secretory protein 2
Database Link:	<a href="#">NP_003287</a> <a href="#">Entrez Gene 474932 Dog</a> <a href="#">Entrez Gene 7180 Human</a> <a href="#">P16562</a>
Synonyms:	CRISP-2; CT36; GAPDL5; TPX1; TSP1
Protein Families:	Secreted Protein



[View online »](#)

## Product images:



HEK293 lysate (10ug protein in RIPA buffer) overexpressing Human CRISP2 ([RC205312]) with C-terminal MYC tag probed with TA311263 (0.11ug/ml) in Lane A and probed with anti-MYC Tag (1/1000) in Lane C. Mock-transfected HEK293 probed with TA311263 (1mg/ml) in Lane B. Primary incubations were for 1 hour. Detected by chemiluminescence.