

## Product datasheet for **TA311262**

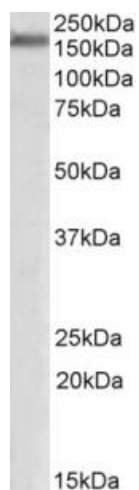
### TJP1 Goat Polyclonal Antibody

#### Product data:

Product Type:	Primary Antibodies
Applications:	IF, PEP-ELISA
Recommended Dilution:	WB: 0.3-1ug/ml
Reactivity:	Human
Host:	Goat
Clonality:	Polyclonal
Immunogen:	Peptide with sequence C-PKPTSQNFSEHDKT, from the internal region of the protein sequence according to NP_003248.3; NP_783297.2.
Formulation:	Supplied at 0.5 mg/ml in Tris saline, 0.02% sodium azide, pH7.3 with 0.5% bovine serum albumin. Aliquot and store at -20C. Minimize freezing and thawing.
Concentration:	lot specific
Purification:	Purified from goat serum by ammonium sulphate precipitation followed by antigen affinity chromatography using the immunizing peptide.
Conjugation:	Unconjugated
Storage:	Store at -20°C as received.
Stability:	Stable for 12 months from date of receipt.
Gene Name:	tight junction protein 1
Database Link:	<a href="#">NP_003248</a> <a href="#">Entrez Gene 7082 Human</a> <a href="#">Q07157</a>
Synonyms:	ZO-1
Protein Families:	Druggable Genome
Protein Pathways:	Adherens junction, Epithelial cell signaling in Helicobacter pylori infection, Gap junction, Tight junction, Vibrio cholerae infection



[View online »](#)

**Product images:**

(0.3ug/ml) staining of Human Cerebral Cortex lysate (35ug protein in RIPA buffer). Primary incubation was 1 hour. Detected by chemiluminescence.