

Product datasheet for **TA311260**

TATA binding protein (TBP) Goat Polyclonal Antibody

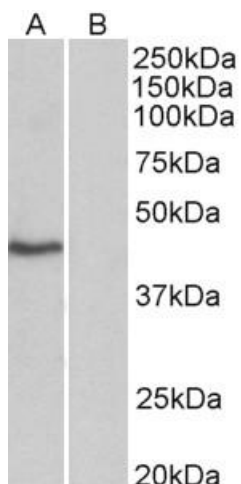
Product data:

Product Type:	Primary Antibodies
Applications:	IF, WB
Recommended Dilution:	WB 1:1000, IF 1:100
Reactivity:	Human
Host:	Goat
Clonality:	Polyclonal
Immunogen:	Peptide with sequence DQNNSLPPYAQ-C, from the N Terminus of the protein sequence according to NP_003185.1.
Formulation:	Supplied at 0.5 mg/ml in Tris saline, 0.02% sodium azide, pH7.3 with 0.5% bovine serum albumin. Aliquot and store at -20C. Minimize freezing and thawing.
Concentration:	lot specific
Purification:	Purified from goat serum by ammonium sulphate precipitation followed by antigen affinity chromatography using the immunizing peptide.
Conjugation:	Unconjugated
Storage:	Store at -20°C as received.
Stability:	Stable for 12 months from date of receipt.
Gene Name:	TATA-box binding protein
Database Link:	NP_003185 Entrez Gene 6908 Human P20226
Synonyms:	GTF2D; GTF2D1; HDL4; SCA17; TFIID
Protein Families:	Druggable Genome, Transcription Factors
Protein Pathways:	Basal transcription factors, Huntington's disease

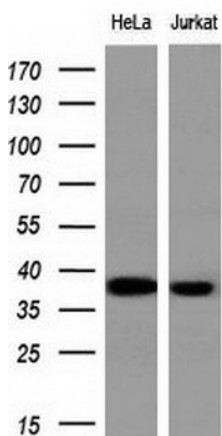


[View online »](#)

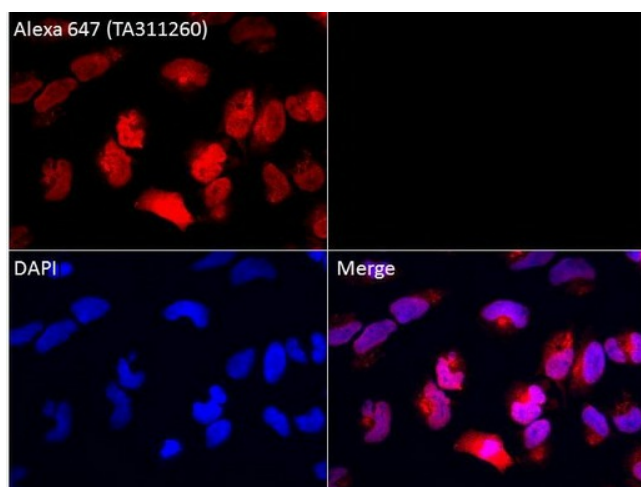
Product images:



(0.3ug/ml) staining of HeLa nuclear (A) and cytosolic (B) lysates (35ug protein in commercial extraction buffer). Primary incubation was 1 hour. Detected by chemiluminescence.



Western blot analysis of extracts (10ug) from 2 different cell lines by using anti-TBP Polyclonal antibody (1:1000).



Immunofluorescent staining of HeLa cells using anti-TBP Goat polyclonal antibody (TA311260) (1:100).