

## Product datasheet for **TA311258**

### TRIM21 Goat Polyclonal Antibody

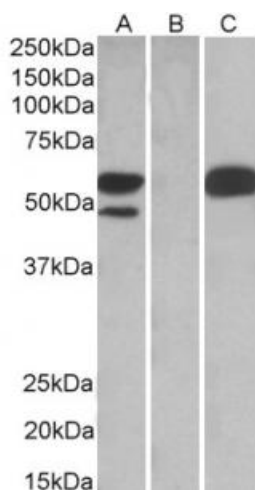
#### Product data:

Product Type:	Primary Antibodies
Applications:	WB
Recommended Dilution:	WB: 0.2-1ug/ml
Reactivity:	Human
Host:	Goat
Clonality:	Polyclonal
Immunogen:	Peptide with sequence CPLNIGSQGSTDY, from the C Terminus of the protein sequence according to NP_003132.2.
Formulation:	Supplied at 0.5 mg/ml in Tris saline, 0.02% sodium azide, pH7.3 with 0.5% bovine serum albumin. Aliquot and store at -20C. Minimize freezing and thawing.
Concentration:	lot specific
Purification:	Purified from goat serum by ammonium sulphate precipitation followed by antigen affinity chromatography using the immunizing peptide.
Conjugation:	Unconjugated
Storage:	Store at -20°C as received.
Stability:	Stable for 12 months from date of receipt.
Gene Name:	tripartite motif containing 21
Database Link:	<a href="#">NP_003132</a> <a href="#">Entrez Gene 6737 Human P19474</a>
Synonyms:	RNF81; Ro; RO52; SSA; SSA1
Protein Families:	Druggable Genome
Protein Pathways:	Systemic lupus erythematosus



[View online »](#)

## Product images:



HEK293 lysate (10ug protein in RIPA buffer) overexpressing Human TRIM21 with C-terminal MYC tag probed with TA311258 (1ug/ml) in Lane A and probed with anti-MYC Tag (1:1000) in Lane C. Mock-transfected HEK293 probed with TA311258 (1mg/ml) in Lane B. Primary incubations were for 1 hour. Detected by chemiluminescence.