

Product datasheet for **TA311257**

Serum Response Factor (SRF) Goat Polyclonal Antibody

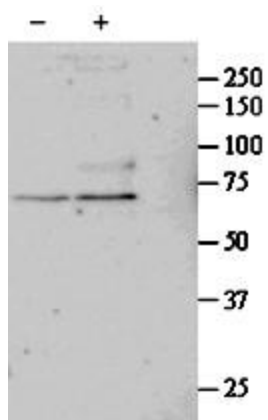
Product data:

Product Type:	Primary Antibodies
Applications:	WB
Recommended Dilution:	WB: 1-3ug/ml
Reactivity:	Human (Expected from sequence similarity: Mouse, Dog, Cow)
Host:	Goat
Clonality:	Polyclonal
Immunogen:	Peptide with sequence C-QASPSRDSSTDLTQ, from the internal region of the protein sequence according to NP_003122.1.
Formulation:	Supplied at 0.5 mg/ml in Tris saline, 0.02% sodium azide, pH7.3 with 0.5% bovine serum albumin. Aliquot and store at -20C. Minimize freezing and thawing.
Concentration:	lot specific
Purification:	Purified from goat serum by ammonium sulphate precipitation followed by antigen affinity chromatography using the immunizing peptide.
Conjugation:	Unconjugated
Storage:	Store at -20°C as received.
Stability:	Stable for 12 months from date of receipt.
Gene Name:	serum response factor
Database Link:	NP_003122 Entrez Gene 20807 Mouse Entrez Gene 612861 Dog Entrez Gene 6722 Human P11831
Synonyms:	MCM1
Protein Families:	Druggable Genome, Transcription Factors
Protein Pathways:	MAPK signaling pathway



[View online »](#)

Product images:



Data provided by customer: (1 ug/ml) staining of untreated (first Lane) and TGF- β 1-treated (second Lane) primary cultured Human Lung fibroblast lysate. Primary incubated overnight at 4C. Detected by western blot using chemiluminescence.