

Product datasheet for TA311251

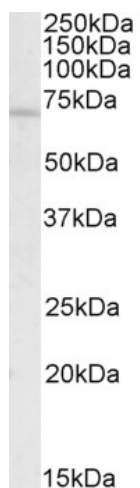
c Rel (REL) Goat Polyclonal Antibody

Product data:

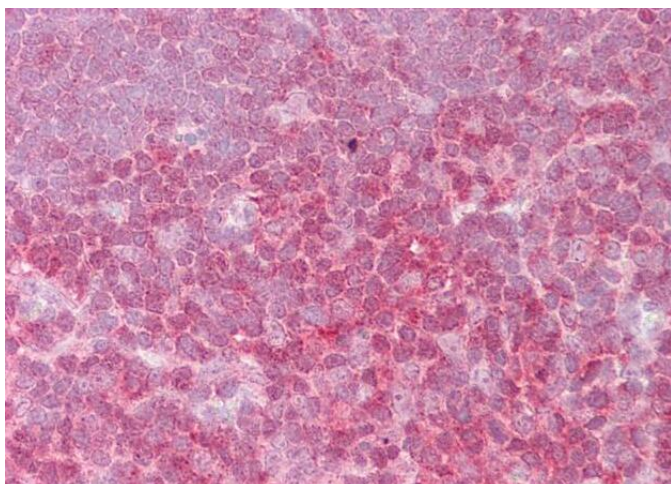
Product Type:	Primary Antibodies
Applications:	IHC, WB
Recommended Dilution:	WB: 0.5-2ug/ml
Reactivity:	Human (Expected from sequence similarity: Dog)
Host:	Goat
Clonality:	Polyclonal
Immunogen:	Peptide with sequence NDLNASNACIYN, from the internal region of the protein sequence according to NP_002899.1.
Formulation:	Supplied at 0.5 mg/ml in Tris saline, 0.02% sodium azide, pH7.3 with 0.5% bovine serum albumin. Aliquot and store at -20C. Minimize freezing and thawing.
Concentration:	lot specific
Purification:	Purified from goat serum by ammonium sulphate precipitation followed by antigen affinity chromatography using the immunizing peptide.
Conjugation:	Unconjugated
Storage:	Store at -20°C as received.
Stability:	Stable for 12 months from date of receipt.
Gene Name:	REL proto-oncogene, NF-kB subunit
Database Link:	NP_002899 Entrez Gene 474606 Dog Entrez Gene 5966 Human Q04864
Synonyms:	C-Rel
Protein Families:	Druggable Genome, Transcription Factors



[View online »](#)

Product images:

TA311251 (0.5ug/ml) staining of Human Spleen lysate (35ug protein in RIPA buffer). Detected by chemiluminescence.



TA311251 (2.5ug/ml) staining of paraffin embedded Human Thymus. Steamed antigen retrieval with citrate buffer pH 6, AP-staining.