

Product datasheet for **TA311250**

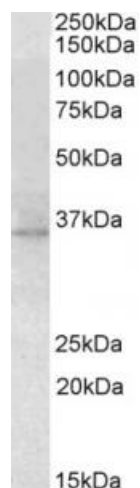
Rdh5 Goat Polyclonal Antibody

Product data:

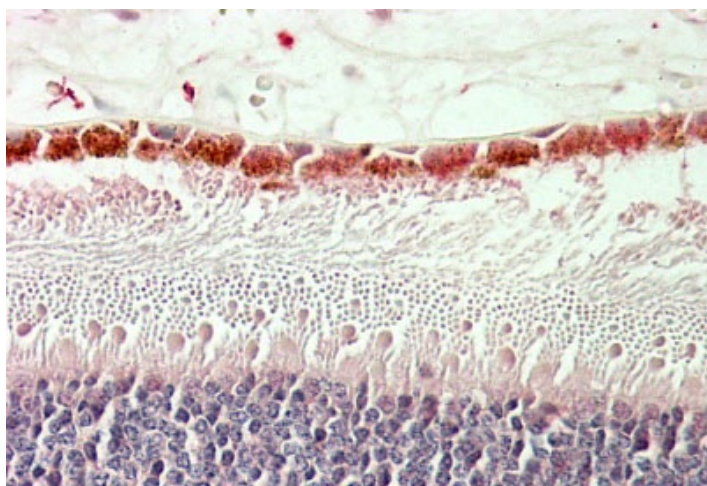
Product Type:	Primary Antibodies
Applications:	FC, IF, IHC, PEP-ELISA
Recommended Dilution:	WB: 2-4ug/mL, IHC: 5-10ug/mL
Reactivity:	Human, Mouse (Expected from sequence similarity: Dog)
Host:	Goat
Clonality:	Polyclonal
Immunogen:	Peptide with sequence C-RDRQSLPASNAFV, from the internal region of the protein sequence according to NP_002896.2.
Formulation:	Supplied at 0.5 mg/ml in Tris saline, 0.02% sodium azide, pH7.3 with 0.5% bovine serum albumin. Aliquot and store at -20C. Minimize freezing and thawing.
Concentration:	lot specific
Purification:	Purified from goat serum by ammonium sulphate precipitation followed by antigen affinity chromatography using the immunizing peptide.
Conjugation:	Unconjugated
Storage:	Store at -20°C as received.
Stability:	Stable for 12 months from date of receipt.
Gene Name:	retinol dehydrogenase 5
Database Link:	NP_598767 Entrez Gene 5959 Human Entrez Gene 481099 Dog Entrez Gene 481098 Dog Entrez Gene 19682 Mouse O55240
Synonyms:	FLJ39337; FLJ97089; HSD17B9; RDH1; SDR9C5



[View online »](#)

Product images:

(2ug/ml) staining of Mouse Eye lysate (35ug protein in RIPA buffer). Primary incubation was 1 hour. Detected by chemiluminescence.



Anti-RDH5 antibody (5ug/ml) staining of paraffin embedded Human Retina. Steamed antigen retrieval with citrate buffer pH 6, AP-staining.