

Product datasheet for **TA311248**

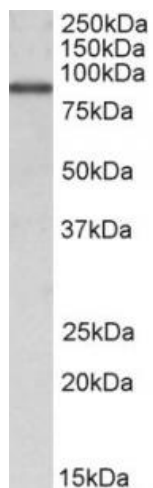
P5CS (ALDH18A1) Goat Polyclonal Antibody

Product data:

Product Type:	Primary Antibodies
Applications:	WB
Recommended Dilution:	WB: 1-3ug/ml
Reactivity:	Human, Mouse (Expected from sequence similarity: Rat, Dog, Cow, Pig)
Host:	Goat
Clonality:	Polyclonal
Immunogen:	Peptide with sequence C-SEHGSLKYLH, from the C Terminus of the protein sequence according to NP_002851.2; NP_001017423.1.
Formulation:	Supplied at 0.5 mg/ml in Tris saline, 0.02% sodium azide, pH7.3 with 0.5% bovine serum albumin. Aliquot and store at -20C. Minimize freezing and thawing.
Concentration:	lot specific
Purification:	Purified from goat serum by ammonium sulphate precipitation followed by antigen affinity chromatography using the immunizing peptide.
Conjugation:	Unconjugated
Storage:	Store at -20°C as received.
Stability:	Stable for 12 months from date of receipt.
Gene Name:	aldehyde dehydrogenase 18 family member A1
Database Link:	NP_002851 Entrez Gene 56454 Mouse Entrez Gene 361755 Rat Entrez Gene 477781 Dog Entrez Gene 5832 Human P54886
Synonyms:	ARCL3A; GSAS; P5CS; PYCS
Protein Families:	Druggable Genome
Protein Pathways:	Arginine and proline metabolism, Metabolic pathways



[View online »](#)

Product images:

(1ug/ml) staining of MCF7 lysate (35ug protein in RIPA buffer). Primary incubation was 1 hour. Detected by chemiluminescence.