

## Product datasheet for **TA311247**

### Pleiotrophin (PTN) Goat Polyclonal Antibody

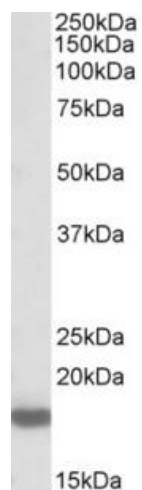
#### Product data:

Product Type:	Primary Antibodies
Applications:	WB
Recommended Dilution:	WB: 0.1-0.3ug/ml
Reactivity:	Human (Expected from sequence similarity: Mouse, Rat, Dog, Cow, Pig)
Host:	Goat
Clonality:	Polyclonal
Immunogen:	Peptide with sequence CGKLTQPKPQAESKK, from the internal region (near C Terminus) of the protein sequence according to NP_002816.1.
Formulation:	Supplied at 0.5 mg/ml in Tris saline, 0.02% sodium azide, pH7.3 with 0.5% bovine serum albumin. Aliquot and store at -20C. Minimize freezing and thawing.
Concentration:	lot specific
Purification:	Purified from goat serum by ammonium sulphate precipitation followed by antigen affinity chromatography using the immunizing peptide.
Conjugation:	Unconjugated
Storage:	Store at -20°C as received.
Stability:	Stable for 12 months from date of receipt.
Gene Name:	pleiotrophin
Database Link:	<a href="#">NP_002816</a> <a href="#">Entrez Gene 19242 Mouse</a> <a href="#">Entrez Gene 24924 Rat</a> <a href="#">Entrez Gene 475509 Dog</a> <a href="#">Entrez Gene 5764 Human</a> <a href="#">P21246</a>
Synonyms:	HARP; HBGF8; HBNF; NFGF1
Protein Families:	Druggable Genome, Phosphatase, Secreted Protein, Transmembrane



[View online »](#)

## Product images:



(0.3ug/ml) staining of Rat Brain lysate (35ug protein in RIPA buffer). Primary incubation was 1 hour. Detected by chemiluminescence.