

## Product datasheet for **TA311246**

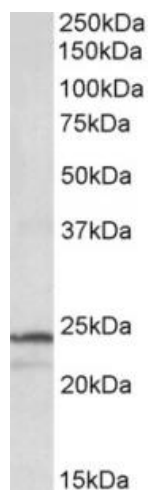
### PSMB3 Goat Polyclonal Antibody

#### Product data:

Product Type:	Primary Antibodies
Applications:	WB
Recommended Dilution:	WB: 1-3ug/ml
Reactivity:	Human (Expected from sequence similarity: Mouse, Rat, Dog, Cow, Pig)
Host:	Goat
Clonality:	Polyclonal
Immunogen:	Peptide with sequence C-NLYELKEGRQ, from the internal region of the protein sequence according to NP_002786.2.
Formulation:	Supplied at 0.5 mg/ml in Tris saline, 0.02% sodium azide, pH7.3 with 0.5% bovine serum albumin. Aliquot and store at -20C. Minimize freezing and thawing.
Concentration:	lot specific
Purification:	Purified from goat serum by ammonium sulphate precipitation followed by antigen affinity chromatography using the immunizing peptide.
Conjugation:	Unconjugated
Storage:	Store at -20°C as received.
Stability:	Stable for 12 months from date of receipt.
Gene Name:	proteasome subunit beta 3
Database Link:	<a href="#">NP_002786</a> <a href="#">Entrez Gene 26446 Mouse</a> <a href="#">Entrez Gene 29676 Rat</a> <a href="#">Entrez Gene 480537 Dog</a> <a href="#">Entrez Gene 5691 Human</a> <a href="#">P49720</a>
Synonyms:	HC10-II
Protein Families:	Druggable Genome, Protease
Protein Pathways:	Proteasome



[View online »](#)

**Product images:**

(1ug/ml) staining of K562 lysate (35ug protein in RIPA buffer). Primary incubation was 1 hour. Detected by chemiluminescence.