

## Product datasheet for **TA311244**

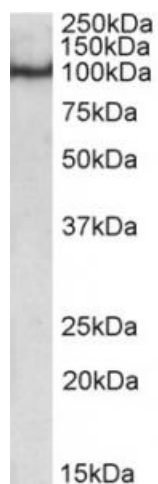
### Oct-1 (POU2F1) Goat Polyclonal Antibody

#### Product data:

Product Type:	Primary Antibodies
Applications:	WB
Recommended Dilution:	WB: 0.5-2ug/ml
Reactivity:	Human (Expected from sequence similarity: Mouse, Rat, Dog, Cow, Pig)
Host:	Goat
Clonality:	Polyclonal
Immunogen:	Peptide with sequence C-NVQSKSNEESGDSQQ, from the internal region (near N Terminus) of the protein sequence according to NP_002688.2.
Formulation:	Supplied at 0.5 mg/ml in Tris saline, 0.02% sodium azide, pH7.3 with 0.5% bovine serum albumin. Aliquot and store at -20C. Minimize freezing and thawing.
Concentration:	lot specific
Purification:	Purified from goat serum by ammonium sulphate precipitation followed by antigen affinity chromatography using the immunizing peptide.
Conjugation:	Unconjugated
Storage:	Store at -20°C as received.
Stability:	Stable for 12 months from date of receipt.
Gene Name:	POU class 2 homeobox 1
Database Link:	<a href="#">NP_002688</a> <a href="#">Entrez Gene 18986 Mouse</a> <a href="#">Entrez Gene 171068 Rat</a> <a href="#">Entrez Gene 490360 Dog</a> <a href="#">Entrez Gene 5451 Human</a> <a href="#">P14859</a>
Synonyms:	oct-1B; OCT1; OTF1
Protein Families:	Druggable Genome, Transcription Factors



[View online »](#)

**Product images:**

(0.5ug/ml) staining of nuclear HeLa lysate (35ug protein in RIPA buffer). Primary incubation was 1 hour. Detected by chemiluminescence.