

Product datasheet for **TA311243**

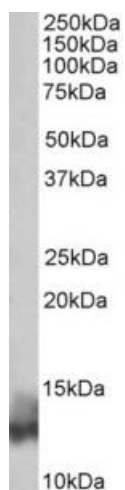
Phospholamban (PLN) Goat Polyclonal Antibody

Product data:

Product Type:	Primary Antibodies
Applications:	WB
Recommended Dilution:	WB: 0.01-0.03ug/ml
Reactivity:	Human, Rat (Expected from sequence similarity: Pig, Cow)
Host:	Goat
Clonality:	Polyclonal
Immunogen:	Peptide with sequence KVQYLTRSAIRR-C, from the N Terminus of the protein sequence according to NP_002658.1.
Formulation:	Supplied at 0.5 mg/ml in Tris saline, 0.02% sodium azide, pH7.3 with 0.5% bovine serum albumin. Aliquot and store at -20C. Minimize freezing and thawing.
Concentration:	lot specific
Purification:	Purified from goat serum by ammonium sulphate precipitation followed by antigen affinity chromatography using the immunizing peptide.
Conjugation:	Unconjugated
Storage:	Store at -20°C as received.
Stability:	Stable for 12 months from date of receipt.
Gene Name:	phospholamban
Database Link:	NP_002658 Entrez Gene 64672 Rat Entrez Gene 5350 Human P26678
Synonyms:	CMD1P; CMH18; PLB
Protein Families:	Transmembrane
Protein Pathways:	Calcium signaling pathway, Dilated cardiomyopathy



[View online »](#)

Product images:

(0.03ug/ml) staining of Human Heart lysate (35ug protein in RIPA buffer). Primary incubation was 1 hour. Detected by chemiluminescence.