

Product datasheet for **TA311240**

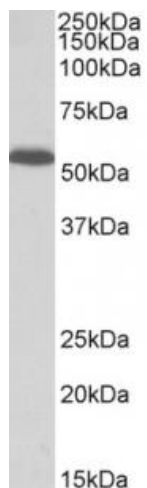
PCOLCE Goat Polyclonal Antibody

Product data:

Product Type:	Primary Antibodies
Applications:	WB
Recommended Dilution:	WB: 0.3-1ug/ml
Reactivity:	Human (Expected from sequence similarity: Dog)
Host:	Goat
Clonality:	Polyclonal
Immunogen:	Peptide with sequence QILTNL SKRK CPSQ, from the C Terminus of the protein sequence according to NP_002584.2.
Formulation:	Supplied at 0.5 mg/ml in Tris saline, 0.02% sodium azide, pH7.3 with 0.5% bovine serum albumin. Aliquot and store at -20C. Minimize freezing and thawing.
Concentration:	lot specific
Purification:	Purified from goat serum by ammonium sulphate precipitation followed by antigen affinity chromatography using the immunizing peptide.
Conjugation:	Unconjugated
Storage:	Store at -20°C as received.
Stability:	Stable for 12 months from date of receipt.
Gene Name:	procollagen C-endopeptidase enhancer
Database Link:	NP_002584 Entrez Gene 489835 Dog Entrez Gene 5118 Human Q15113
Synonyms:	PCPE; PCPE-1; PCPE1
Protein Families:	Secreted Protein



[View online »](#)

Product images:

(0.3ug/ml) staining of Human Skin lysate (35ug protein in RIPA buffer). Primary incubation was 1 hour. Detected by chemiluminescence.