

Product datasheet for **TA311235**

MYF6 Goat Polyclonal Antibody

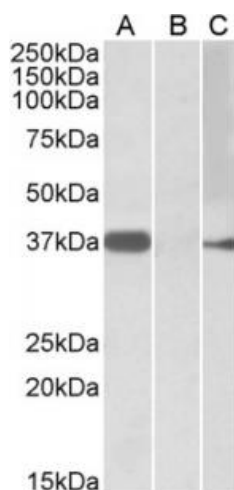
Product data:

Product Type:	Primary Antibodies
Applications:	WB
Recommended Dilution:	WB: 0.5-1ug/ml
Reactivity:	Human (Expected from sequence similarity: Mouse, Rat, Cow, Pig)
Host:	Goat
Clonality:	Polyclonal
Immunogen:	Peptide with sequence C-SYRPKQENLEGAD, from the internal region of the protein sequence according to NP_002460.1.
Formulation:	Supplied at 0.5 mg/ml in Tris saline, 0.02% sodium azide, pH7.3 with 0.5% bovine serum albumin. Aliquot and store at -20C. Minimize freezing and thawing.
Concentration:	lot specific
Purification:	Purified from goat serum by ammonium sulphate precipitation followed by antigen affinity chromatography using the immunizing peptide.
Conjugation:	Unconjugated
Storage:	Store at -20°C as received.
Stability:	Stable for 12 months from date of receipt.
Gene Name:	myogenic factor 6
Database Link:	NP_002460 Entrez Gene 17878 Mouse Entrez Gene 25714 Rat Entrez Gene 4618 Human P23409
Synonyms:	bHLHc4; CNM3; MRF4; myf-6
Protein Families:	Druggable Genome, Transcription Factors



[View online »](#)

Product images:



HEK293 lysate (10ug protein in RIPA buffer) overexpressing Human MYF6 with MYC tag probed with TA311235 (0.5ug/ml) in Lane A and probed with anti-MYC Tag (1:1000) in Lane C. Mock-transfected HEK293 probed with TA311235 (0.5mg/ml) in Lane B. Primary incubations were for 1 hour. Detected by chemiluminescence.