

Product datasheet for **TA311233**

MPV17 Goat Polyclonal Antibody

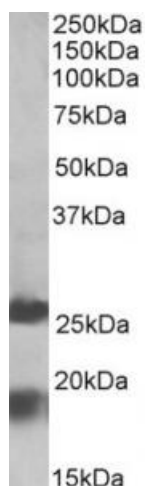
Product data:

Product Type:	Primary Antibodies
Applications:	IHC, WB
Recommended Dilution:	WB: 1-3ug/ml, IHC: 5-10ug/mL
Reactivity:	Human (Expected from sequence similarity: Mouse, Rat, Dog, Cow)
Host:	Goat
Clonality:	Polyclonal
Immunogen:	Peptide with sequence C-QRALAHPWKVQ, from the internal region of the protein sequence according to NP_002428.1.
Formulation:	Supplied at 0.5 mg/ml in Tris saline, 0.02% sodium azide, pH7.3 with 0.5% bovine serum albumin. Aliquot and store at -20C. Minimize freezing and thawing.
Concentration:	lot specific
Purification:	Purified from goat serum by ammonium sulphate precipitation followed by antigen affinity chromatography using the immunizing peptide.
Conjugation:	Unconjugated
Storage:	Store at -20°C as received.
Stability:	Stable for 12 months from date of receipt.
Gene Name:	MPV17, mitochondrial inner membrane protein
Database Link:	NP_002428 Entrez Gene 17527 Mouse Entrez Gene 360463 Rat Entrez Gene 611056 Dog Entrez Gene 4358 Human P39210
Synonyms:	MTDPS6; SYM1
Protein Families:	Transmembrane

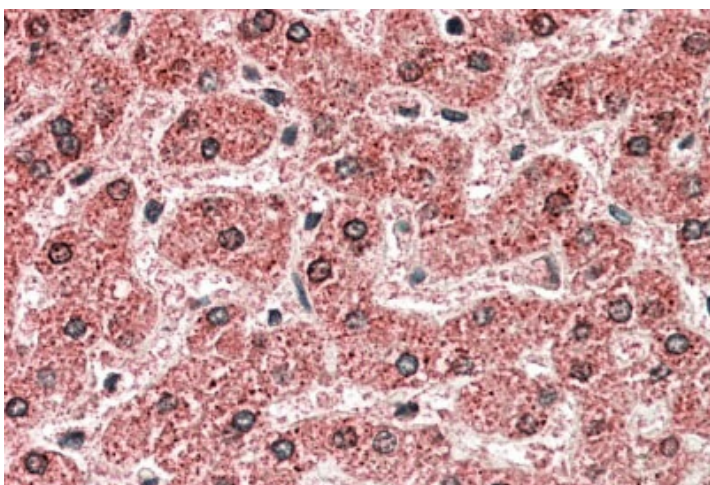


[View online »](#)

Product images:



(2ug/ml) staining of Human Frontal Cortex lysate (35ug protein in RIPA buffer). Primary incubation was 1 hour. Detected by chemiluminescence.



Anti-MPV17 antibody (5ug/ml) staining of paraffin embedded Human Liver. Steamed antigen retrieval with citrate buffer pH 6, AP-staining.