

Product datasheet for **TA311229**

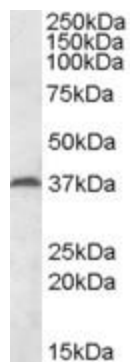
Mest Goat Polyclonal Antibody

Product data:

Product Type:	Primary Antibodies
Applications:	WB
Recommended Dilution:	WB: 0.2-0.5ug/ml
Reactivity:	Mouse, Rat (Expected from sequence similarity: Human, Dog, Cow)
Host:	Goat
Clonality:	Polyclonal
Immunogen:	Peptide with sequence C-QELLYRYKQNRSGR, from the internal region of the protein sequence according to NP_002393.2; NP_803490.1.
Formulation:	Supplied at 0.5 mg/ml in Tris saline, 0.02% sodium azide, pH7.3 with 0.5% bovine serum albumin. Aliquot and store at -20C. Minimize freezing and thawing.
Concentration:	lot specific
Purification:	Purified from goat serum by ammonium sulphate precipitation followed by antigen affinity chromatography using the immunizing peptide.
Conjugation:	Unconjugated
Storage:	Store at -20°C as received.
Stability:	Stable for 12 months from date of receipt.
Gene Name:	mesoderm specific transcript
Database Link:	NP_032616 Entrez Gene 4232 Human Entrez Gene 58827 Rat Entrez Gene 607717 Dog Entrez Gene 17294 Mouse Q07646
Synonyms:	DKFZp686L18234; MGC8703; MGC111102; PEG1



[View online »](#)

Product images:

(0.2ug/ml) staining of Mouse Testis lysate (35ug protein in RIPA buffer). Primary incubation was 1 hour. Detected by chemiluminescence.