

## Product datasheet for **TA311227**

### LSP1 Goat Polyclonal Antibody

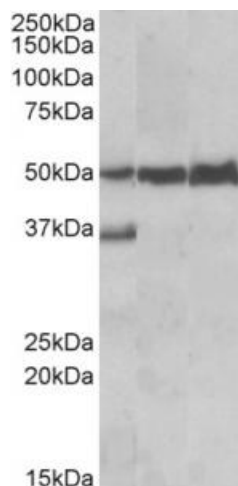
#### Product data:

Product Type:	Primary Antibodies
Applications:	WB
Recommended Dilution:	WB: 0.05-0.2ug/ml
Reactivity:	Human, Mouse, Rat (Expected from sequence similarity: Dog, Cow)
Host:	Goat
Clonality:	Polyclonal
Immunogen:	Peptide with sequence C-RYKFBVATGHGKYEKV, from the C Terminus of the protein sequence according to NP_002330.1; NP_001013271.1.
Formulation:	Supplied at 0.5 mg/ml in Tris saline, 0.02% sodium azide, pH7.3 with 0.5% bovine serum albumin. Aliquot and store at -20C. Minimize freezing and thawing.
Concentration:	lot specific
Purification:	Purified from goat serum by ammonium sulphate precipitation followed by antigen affinity chromatography using the immunizing peptide.
Conjugation:	Unconjugated
Storage:	Store at -20°C as received.
Stability:	Stable for 12 months from date of receipt.
Gene Name:	lymphocyte-specific protein 1
Database Link:	<a href="#">NP_002330</a> <a href="#">Entrez Gene 16985 Mouse</a> <a href="#">Entrez Gene 361680 Rat</a> <a href="#">Entrez Gene 611553 Dog</a> <a href="#">Entrez Gene 4046 Human</a> <a href="#">P33241</a>
Synonyms:	pp52; WP34



[View online »](#)

**Product images:**



(0.05ug/ml) staining of Human Liver lysate (Lane 1), Mouse Liver lysate (Lane 2) and Rat Liver lysate (Lane 3) (35ug protein in RIPA buffer). Primary incubation was 1 hour. Detected by chemiluminescence.



(0.05ug/ml) staining of Human Peripheral Lymphocytes lysate (35ug protein in RIPA buffer). Primary incubation was 1 hour. Detected by chemiluminescence.