

Product datasheet for **TA311226**

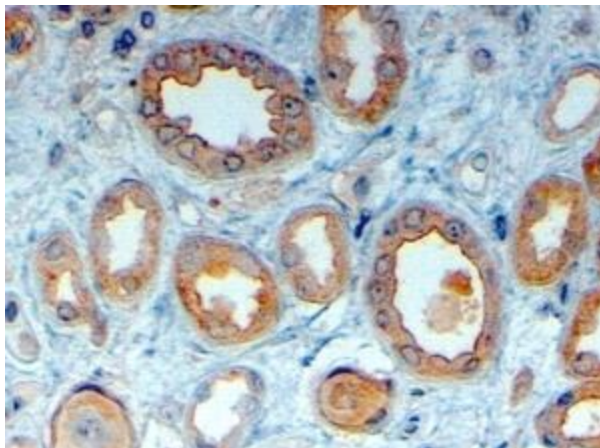
LRP6 Goat Polyclonal Antibody

Product data:

Product Type:	Primary Antibodies
Applications:	IHC
Recommended Dilution:	WB: 0.1ug/ml, IHC: 4-6ug/ml
Reactivity:	Human (Expected from sequence similarity: Mouse, Rat, Dog)
Host:	Goat
Clonality:	Polyclonal
Immunogen:	Peptide with sequence CMTSVATAKGYTSDL, from the internal region of the protein sequence according to NP_002327.2.
Formulation:	Supplied at 0.5 mg/ml in Tris saline, 0.02% sodium azide, pH7.3 with 0.5% bovine serum albumin. Aliquot and store at -20C. Minimize freezing and thawing.
Concentration:	lot specific
Purification:	Purified from goat serum by ammonium sulphate precipitation followed by antigen affinity chromatography using the immunizing peptide.
Conjugation:	Unconjugated
Storage:	Store at -20°C as received.
Stability:	Stable for 12 months from date of receipt.
Gene Name:	LDL receptor related protein 6
Database Link:	NP_002327 Entrez Gene 16974 Mouse Entrez Gene 312781 Rat Entrez Gene 477692 Dog Entrez Gene 4040 Human O75581
Synonyms:	ADCAD2; STHAG7
Protein Families:	Druggable Genome, Transmembrane
Protein Pathways:	Wnt signaling pathway



[View online »](#)

Product images:

(4ug/ml) staining of paraffin embedded Human Kidney. Steamed antigen retrieval with citrate buffer pH 6, HRP-staining.