

Product datasheet for **TA311223**

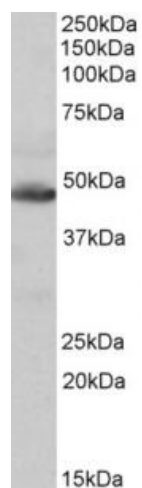
IDH2 Goat Polyclonal Antibody

Product data:

Product Type:	Primary Antibodies
Applications:	WB
Recommended Dilution:	WB: 0.1-0.3ug/ml
Reactivity:	Human, Mouse, Rat (Expected from sequence similarity: Dog, Cow, Pig)
Host:	Goat
Clonality:	Polyclonal
Immunogen:	Peptide with sequence CIHGLSNVKLNE, from the internal region of the protein sequence according to NP_002159.2.
Formulation:	Supplied at 0.5 mg/ml in Tris saline, 0.02% sodium azide, pH7.3 with 0.5% bovine serum albumin. Aliquot and store at -20C. Minimize freezing and thawing.
Concentration:	lot specific
Purification:	Purified from goat serum by ammonium sulphate precipitation followed by antigen affinity chromatography using the immunizing peptide.
Conjugation:	Unconjugated
Storage:	Store at -20°C as received.
Stability:	Stable for 12 months from date of receipt.
Gene Name:	isocitrate dehydrogenase (NADP(+)) 2, mitochondrial
Database Link:	NP_002159 Entrez Gene 269951 Mouse Entrez Gene 361596 Rat Entrez Gene 479043 Dog Entrez Gene 3418 Human P48735
Synonyms:	D2HGA2; ICD-M; IDH; IDHM; IDP; IDPM; mNADP-IDH
Protein Pathways:	Citrate cycle (TCA cycle), Glutathione metabolism, Metabolic pathways



[View online »](#)

Product images:

(0.1 ug/ml) staining of Human Heart lysate (35ug protein in RIPA buffer). Primary incubation was 1 hour. Detected by chemiluminescence.