

Product datasheet for **TA311219**

GNAQ Goat Polyclonal Antibody

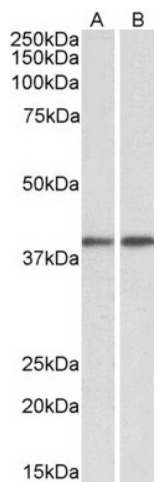
Product data:

Product Type:	Primary Antibodies
Applications:	WB
Recommended Dilution:	WB: 0.1-0.3 µg/ml.
Reactivity:	Human, Mouse, Rat, Pig (Expected from sequence similarity: Dog, Cow)
Host:	Goat
Clonality:	Polyclonal
Immunogen:	Peptide with sequence C-NDLDRVADPAYLPT, from the internal region of the protein sequence according to NP_002063.2.
Formulation:	Supplied at 0.5 mg/ml in Tris saline, 0.02% sodium azide, pH7.3 with 0.5% bovine serum albumin. Aliquot and store at -20C. Minimize freezing and thawing.
Concentration:	lot specific
Purification:	Purified from goat serum by ammonium sulphate precipitation followed by antigen affinity chromatography using the immunizing peptide.
Conjugation:	Unconjugated
Storage:	Store at -20°C as received.
Stability:	Stable for 12 months from date of receipt.
Gene Name:	G protein subunit alpha q
Database Link:	NP_002063 Entrez Gene 14682 Mouse Entrez Gene 81666 Rat Entrez Gene 403928 Dog Entrez Gene 2776 Human P50148
Synonyms:	CMC1; G-ALPHA-q; GAQ; SWS
Protein Families:	Druggable Genome
Protein Pathways:	Alzheimer's disease, Calcium signaling pathway, Gap junction, GnRH signaling pathway, Huntington's disease, Long-term depression, Long-term potentiation, Melanogenesis, Vascular smooth muscle contraction

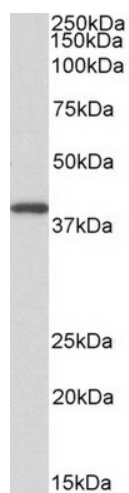


[View online »](#)

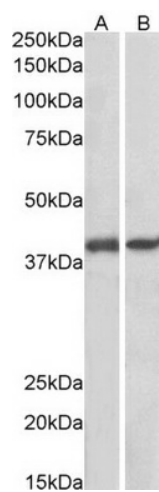
Product images:



TA311219 (0.1 ug/ml) staining of Mouse (A) and Rat (B) Testis lysates (35 ug protein in RIPA buffer). Primary incubation was 1 hour. Detected by chemiluminescence.



TA311219 (0.1 ug/ml) staining of Peripheral Blood Lymphocytes lysate (35 ug protein in RIPA buffer). Primary incubation was 1 hour. Detected by chemiluminescence.



TA311219 (0.1 ug/ml) staining of Pig Colon (A) and Pig Spleen (B) lysates (35 ug protein in RIPA buffer). Primary incubation was 1 hour. Detected by chemiluminescence.