

Product datasheet for **TA311218**

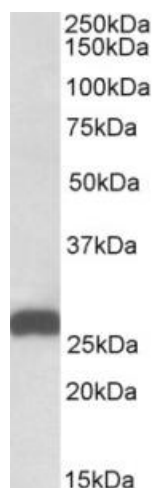
ETFB Goat Polyclonal Antibody

Product data:

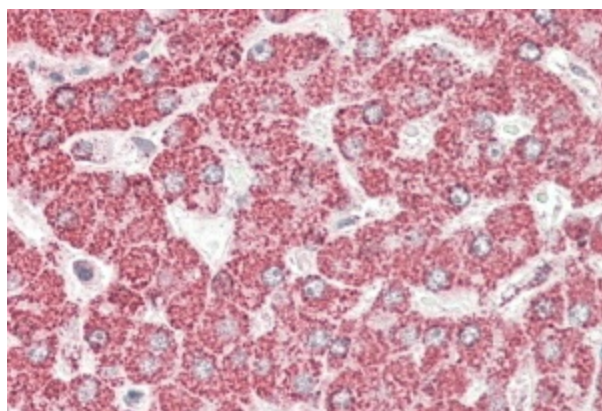
Product Type:	Primary Antibodies
Applications:	IHC, WB
Recommended Dilution:	WB: 0.01-0.03ug/ml; IHC: 3-5ug/ml; ELISA: 1:8,000
Reactivity:	Human, Mouse, Rat (Expected from sequence similarity: Dog, Cow)
Host:	Goat
Clonality:	Polyclonal
Immunogen:	Peptide with sequence C-PQRTAGVKVETTE, from the C Terminus of the protein sequence according to NP_001976.1; NP_001014763.1.
Formulation:	Supplied at 0.5 mg/ml in Tris saline, 0.02% sodium azide, pH7.3 with 0.5% bovine serum albumin. Aliquot and store at -20C. Minimize freezing and thawing.
Concentration:	lot specific
Purification:	Purified from goat serum by ammonium sulphate precipitation followed by antigen affinity chromatography using the immunizing peptide.
Conjugation:	Unconjugated
Storage:	Store at -20°C as received.
Stability:	Stable for 12 months from date of receipt.
Gene Name:	electron transfer flavoprotein beta subunit
Database Link:	NP_001976 Entrez Gene 110826 Mouse Entrez Gene 292845 Rat Entrez Gene 476400 Dog Entrez Gene 2109 Human P38117
Synonyms:	FP585; MADD
Protein Families:	Druggable Genome



[View online »](#)

Product images:

(0.01 ug/ml) staining of Mouse Liver lysate (35ug protein in RIPA buffer). Primary incubation was 1 hour. Detected by chemiluminescence.



TA311218 (3.8ug/ml) staining of paraffin embedded Human Liver. Steamed antigen retrieval with citrate buffer pH 6, AP-staining.