

Product datasheet for **TA311216**

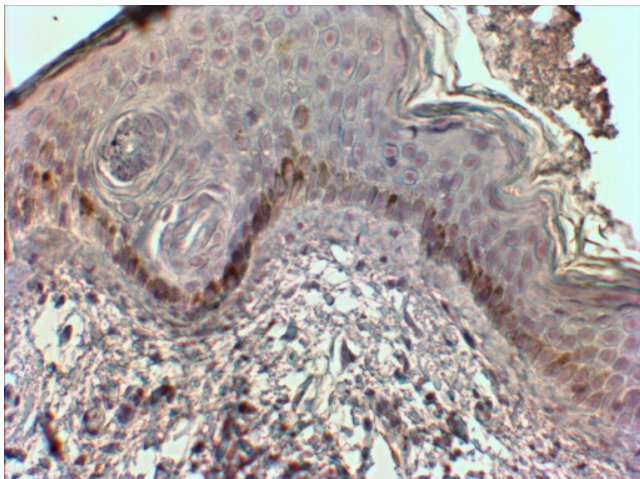
CMA1 Goat Polyclonal Antibody

Product data:

Product Type:	Primary Antibodies
Applications:	IHC
Recommended Dilution:	WB: 0.5-1 µg/ml. IHC: 2-4 µg/ml.
Reactivity:	Human
Host:	Goat
Clonality:	Polyclonal
Immunogen:	Peptide with sequence C-QFRHPKYNTSTLHHD, from the internal region of the protein sequence according to NP_001827.1.
Formulation:	Supplied at 0.5 mg/ml in Tris saline, 0.02% sodium azide, pH7.3 with 0.5% bovine serum albumin. Aliquot and store at -20C. Minimize freezing and thawing.
Concentration:	lot specific
Purification:	Purified from goat serum by ammonium sulphate precipitation followed by antigen affinity chromatography using the immunizing peptide.
Conjugation:	Unconjugated
Storage:	Store at -20°C as received.
Stability:	Stable for 12 months from date of receipt.
Gene Name:	chymase 1
Database Link:	NP_001827 Entrez Gene 1215 Human P23946
Synonyms:	chymase; CYH; MCT1
Protein Families:	Druggable Genome, Protease, Secreted Protein
Protein Pathways:	Renin-angiotensin system



[View online »](#)

Product images:

TA311216 (2 ug/ml) staining of paraffin embedded Human Skin. Steamed antigen retrieval with citrate buffer pH 6, HRP-staining.