

## Product datasheet for **TA311213**

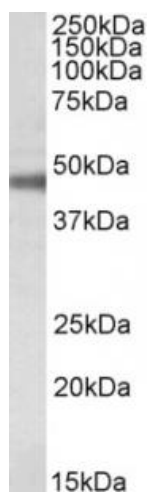
### Atp1b1 Goat Polyclonal Antibody

#### Product data:

Product Type:	Primary Antibodies
Applications:	WB
Recommended Dilution:	WB: 0.1-0.3ug/ml
Reactivity:	Mouse, Rat (Expected from sequence similarity: Human, Dog, Cow, Pig)
Host:	Goat
Clonality:	Polyclonal
Immunogen:	Peptide with sequence C-KTEISFRPNPKSYE, from the internal region of the protein sequence according to NP_001668.1; NP_001001787.1.
Formulation:	Supplied at 0.5 mg/ml in Tris saline, 0.02% sodium azide, pH7.3 with 0.5% bovine serum albumin. Aliquot and store at -20C. Minimize freezing and thawing.
Concentration:	lot specific
Purification:	Purified from goat serum by ammonium sulphate precipitation followed by antigen affinity chromatography using the immunizing peptide.
Conjugation:	Unconjugated
Storage:	Store at -20°C as received.
Stability:	Stable for 12 months from date of receipt.
Gene Name:	ATPase, Na <sup>+</sup> /K <sup>+</sup> transporting, beta 1 polypeptide
Database Link:	<a href="#">NP_033851</a> <a href="#">Entrez Gene 481 Human</a> <a href="#">Entrez Gene 25650 Rat</a> <a href="#">Entrez Gene 403966 Dog</a> <a href="#">Entrez Gene 11931 Mouse</a> <a href="#">P14094</a>
Synonyms:	adenosinetriphosphatase; ATP1B; MGC1798; OTTHUMP00000032538



[View online »](#)

**Product images:**

(0.1ug/ml) staining of Rat Retina lysate (35ug protein in RIPA buffer). Primary incubation was 1 hour. Detected by chemiluminescence.