

Product datasheet for **TA311210**

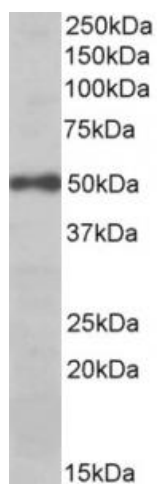
EIF3E Goat Polyclonal Antibody

Product data:

Product Type:	Primary Antibodies
Applications:	WB
Recommended Dilution:	WB: 0.03-0.1 ug/ml
Reactivity:	Human (Expected from sequence similarity: Dog, Cow, Pig)
Host:	Goat
Clonality:	Polyclonal
Immunogen:	Peptide with sequence C-KLNQNSRSEAPN, from the C Terminus of the protein sequence according to NP_001559.1.
Formulation:	Supplied at 0.5 mg/ml in Tris saline, 0.02% sodium azide, pH7.3 with 0.5% bovine serum albumin. Aliquot and store at -20C. Minimize freezing and thawing.
Concentration:	lot specific
Purification:	Purified from goat serum by ammonium sulphate precipitation followed by antigen affinity chromatography using the immunizing peptide.
Conjugation:	Unconjugated
Storage:	Store at -20°C as received.
Stability:	Stable for 12 months from date of receipt.
Gene Name:	eukaryotic translation initiation factor 3 subunit E
Database Link:	NP_001559 Entrez Gene 475070 Dog Entrez Gene 3646 Human P60228
Synonyms:	eIF3-p46; EIF3-P48; EIF3S6; INT6



[View online »](#)

Product images:

(0.03ug/ml) staining of Daudi lysate (35ug protein in RIPA buffer). Primary incubation was 1 hour. Detected by chemiluminescence.