

Product datasheet for **TA311205**

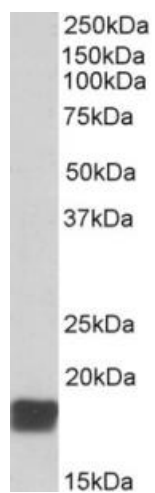
Cirbp Goat Polyclonal Antibody

Product data:

Product Type:	Primary Antibodies
Applications:	WB
Recommended Dilution:	WB: 0.01-0.03ug/ml, IHC: 3-5ug/ml
Reactivity:	Human, Mouse, Rat (Expected from sequence similarity: Dog, Cow)
Host:	Goat
Clonality:	Polyclonal
Immunogen:	Peptide with sequence C-RDSYDSYATHNE, from the C Terminus of the protein sequence according to NP_001271.1.
Formulation:	Supplied at 0.5 mg/ml in Tris saline, 0.02% sodium azide, pH7.3 with 0.5% bovine serum albumin. Aliquot and store at -20C. Minimize freezing and thawing.
Concentration:	lot specific
Purification:	Purified from goat serum by ammonium sulphate precipitation followed by antigen affinity chromatography using the immunizing peptide.
Conjugation:	Unconjugated
Storage:	Store at -20°C as received.
Stability:	Stable for 12 months from date of receipt.
Gene Name:	cold inducible RNA binding protein
Database Link:	NP_031731 Entrez Gene 1153 Human Entrez Gene 81825 Rat Entrez Gene 476755 Dog Entrez Gene 12696 Mouse P60824
Synonyms:	A18HNRNP; CIRP



[View online »](#)

Product images:

(0.01ug/ml) staining of Mouse Testis lysate (35ug protein in RIPA buffer). Primary incubation was 1 hour. Detected by chemiluminescence.