

## Product datasheet for **TA311201**

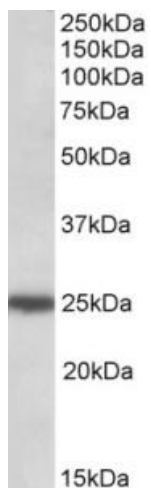
### ARHGDIG Goat Polyclonal Antibody

#### Product data:

Product Type:	Primary Antibodies
Applications:	WB
Recommended Dilution:	WB: 0.5-2ug/ml
Reactivity:	Human (Expected from sequence similarity: Mouse, Rat, Dog, Cow)
Host:	Goat
Clonality:	Polyclonal
Immunogen:	Peptide with sequence C-EAVPEYRAPGRK, from the C Terminus of the protein sequence according to NP_001167.2.
Formulation:	Supplied at 0.5 mg/ml in Tris saline, 0.02% sodium azide, pH7.3 with 0.5% bovine serum albumin. Aliquot and store at -20C. Minimize freezing and thawing.
Concentration:	lot specific
Purification:	Purified from goat serum by ammonium sulphate precipitation followed by antigen affinity chromatography using the immunizing peptide.
Conjugation:	Unconjugated
Storage:	Store at -20°C as received.
Stability:	Stable for 12 months from date of receipt.
Gene Name:	Rho GDP dissociation inhibitor gamma
Database Link:	<a href="#">NP_001167</a> <a href="#">Entrez Gene 14570 Mouse</a> <a href="#">Entrez Gene 360500 Rat</a> <a href="#">Entrez Gene 611541 Dog</a> <a href="#">Entrez Gene 398 Human</a> <a href="#">Q99819</a>
Synonyms:	RHOGDI-3
Protein Families:	Druggable Genome



[View online »](#)

**Product images:**

(0.5ug/ml) staining of HeLa lysate (35ug protein in RIPA buffer). Primary incubation was 1 hour. Detected by chemiluminescence.