

Product datasheet for **TA311196**

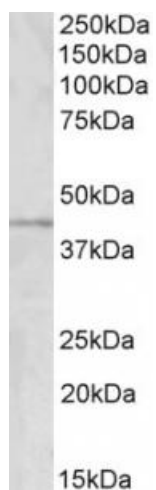
GRAMD2B Goat Polyclonal Antibody

Product data:

Product Type:	Primary Antibodies
Applications:	WB
Recommended Dilution:	WB: 1-3ug/ml
Reactivity:	Human, Mouse (Expected from sequence similarity: Rat, Dog, Cow)
Host:	Goat
Clonality:	Polyclonal
Immunogen:	Peptide with sequence C-QTPESENSRD, from the internal region of the protein sequence according to NP_001139791.1; NP_076416.2; NP_001139792.1; NP_001139793.1; NP_001139794.1.
Formulation:	Supplied at 0.5 mg/ml in Tris saline, 0.02% sodium azide, pH7.3 with 0.5% bovine serum albumin. Aliquot and store at -20C. Minimize freezing and thawing.
Concentration:	lot specific
Purification:	Purified from goat serum by ammonium sulphate precipitation followed by antigen affinity chromatography using the immunizing peptide.
Conjugation:	Unconjugated
Storage:	Store at -20°C as received.
Stability:	Stable for 12 months from date of receipt.
Gene Name:	GRAM domain containing 3
Database Link:	NP_001139791 Entrez Gene 107022 Mouse Entrez Gene 307288 Rat Entrez Gene 474662 Dog Entrez Gene 65983 Human Q96HH9
Synonyms:	NS3TP2
Protein Families:	Transmembrane



[View online »](#)

Product images:

(1 ug/ml) staining of Human Temporal Cortex lysate (35ug protein in RIPA buffer). Primary incubation was 1 hour. Detected by chemiluminescence.