

Product datasheet for **TA311192**

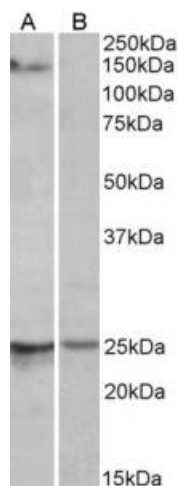
Rbm20 Goat Polyclonal Antibody

Product data:

Product Type:	Primary Antibodies
Applications:	WB
Recommended Dilution:	WB: 1-3ug/ml
Reactivity:	Mouse (Expected from sequence similarity: Human, Rat, Cow)
Host:	Goat
Clonality:	Polyclonal
Immunogen:	Peptide with sequence C-QLDKAELDERP, from the internal region of the protein sequence according to NP_001127835.1.
Formulation:	Supplied at 0.5 mg/ml in Tris saline, 0.02% sodium azide, pH7.3 with 0.5% bovine serum albumin. Aliquot and store at -20C. Minimize freezing and thawing.
Concentration:	lot specific
Purification:	Purified from goat serum by ammonium sulphate precipitation followed by antigen affinity chromatography using the immunizing peptide.
Conjugation:	Unconjugated
Storage:	Store at -20°C as received.
Stability:	Stable for 12 months from date of receipt.
Gene Name:	RNA binding motif protein 20
Database Link:	NP_001164318 Entrez Gene 282996 Human Entrez Gene 309544 Rat Entrez Gene 73713 Mouse Q3UQS8
Synonyms:	1110018J23Rik; 2010003H22Rik; AI646761



[View online »](#)

Product images:

(1ug/ml) staining of Mouse Heart lysate (35ug protein in RIPA buffer) with (B) and without (A) blocking with the immunising peptide. Primary incubation was 1 hour. Detected by chemiluminescence.