

Product datasheet for **TA311189**

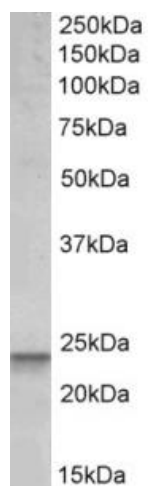
Bcl2 Binding component 3 (BBC3) Goat Polyclonal Antibody

Product data:

Product Type:	Primary Antibodies
Applications:	WB
Recommended Dilution:	WB: 0.1-0.3ug/ml
Reactivity:	Human
Host:	Goat
Clonality:	Polyclonal
Immunogen:	Peptide with sequence C-DGGRPQRTVR, from the internal region of the protein sequence according to NP_001120712.1.
Formulation:	Supplied at 0.5 mg/ml in Tris saline, 0.02% sodium azide, pH7.3 with 0.5% bovine serum albumin. Aliquot and store at -20C. Minimize freezing and thawing.
Concentration:	lot specific
Purification:	Purified from goat serum by ammonium sulphate precipitation followed by antigen affinity chromatography using the immunizing peptide.
Conjugation:	Unconjugated
Storage:	Store at -20°C as received.
Stability:	Stable for 12 months from date of receipt.
Gene Name:	BCL2 binding component 3
Database Link:	NP_001120712 Entrez Gene 27113 Human Q96PG8
Synonyms:	JFY-1; JFY1; PUMA
Protein Families:	Druggable Genome
Protein Pathways:	Huntington's disease, p53 signaling pathway



[View online »](#)

Product images:

(0.1ug/ml) staining of Peripheral Blood Lymphocytes lysate (35ug protein in RIPA buffer). Primary incubation was 1 hour. Detected by chemiluminescence.