

Product datasheet for **TA311188**

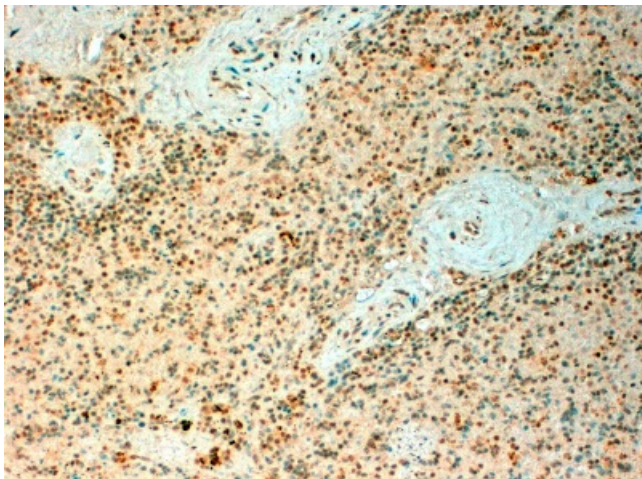
TET2 Goat Polyclonal Antibody

Product data:

Product Type:	Primary Antibodies
Applications:	IHC
Recommended Dilution:	IHC: 2-6 µg/ml.
Reactivity:	Human (Expected from sequence similarity: Mouse, Dog)
Host:	Goat
Clonality:	Polyclonal
Immunogen:	Peptide with sequence C-PHPQSNNDQREGSF, from the internal region of the protein sequence according to NP_001120680.1; NP_060098.3.
Formulation:	Supplied at 0.5 mg/ml in Tris saline, 0.02% sodium azide, pH7.3 with 0.5% bovine serum albumin. Aliquot and store at -20C. Minimize freezing and thawing.
Concentration:	lot specific
Purification:	Purified from goat serum by ammonium sulphate precipitation followed by antigen affinity chromatography using the immunizing peptide.
Conjugation:	Unconjugated
Storage:	Store at -20°C as received.
Stability:	Stable for 12 months from date of receipt.
Gene Name:	tet methylcytosine dioxygenase 2
Database Link:	NP_001120680 Entrez Gene 214133 Mouse Entrez Gene 478499 Dog Entrez Gene 54790 Human Q6N021
Synonyms:	KIAA1546; MDS



[View online »](#)

Product images:

TA311188 (4 ug/ml) staining of paraffin embedded Human Spleen. Steamed antigen retrieval with citrate buffer pH 6, HRP-staining.