

Product datasheet for **TA311184**

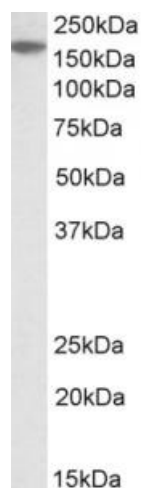
EVI1 (MECOM) Goat Polyclonal Antibody

Product data:

Product Type:	Primary Antibodies
Applications:	PEP-ELISA, WB
Recommended Dilution:	WB: 1-3ug/ml
Reactivity:	Human
Host:	Goat
Clonality:	Polyclonal
Immunogen:	Peptide with sequence C-DKESLHSTSH, from the internal region of the protein sequence according to NP_001098547.3; NP_005232.2; NP_004982.2; NP_001157471.1; NP_001157472.1.
Formulation:	Supplied at 0.5 mg/ml in Tris saline, 0.02% sodium azide, pH7.3 with 0.5% bovine serum albumin. Aliquot and store at -20C. Minimize freezing and thawing.
Concentration:	lot specific
Purification:	Purified from goat serum by ammonium sulphate precipitation followed by antigen affinity chromatography using the immunizing peptide.
Conjugation:	Unconjugated
Storage:	Store at -20°C as received.
Stability:	Stable for 12 months from date of receipt.
Gene Name:	MDS1 and EVI1 complex locus
Database Link:	NP_001098547 Entrez Gene 2122 Human Q03112
Synonyms:	AML1-EVI-1; EVI1; MDS1; MDS1-EVI1; PRDM3
Protein Families:	Druggable Genome, Transcription Factors
Protein Pathways:	Chronic myeloid leukemia, MAPK signaling pathway, Pathways in cancer



[View online »](#)

Product images:

(2ug/ml) staining of A549 lysate (35ug protein in RIPA buffer). Primary incubation was 1 hour. Detected by chemiluminescence.