

Product datasheet for **TA311182**

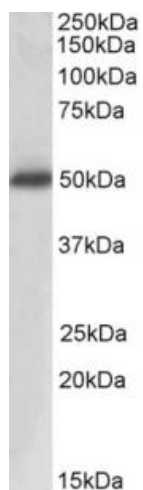
Prostatic Acid Phosphatase (ACPP) Goat Polyclonal Antibody

Product data:

Product Type:	Primary Antibodies
Applications:	WB
Recommended Dilution:	WB: 0.3-1ug/ml, IHC: 3-5ug/ml
Reactivity:	Human (Expected from sequence similarity: Mouse, Rat, Dog, Cow)
Host:	Goat
Clonality:	Polyclonal
Immunogen:	Peptide with sequence C-YGIHKQKEKSRLQ, from the internal region of the protein sequence according to NP_001090.2.
Formulation:	Supplied at 0.5 mg/ml in Tris saline, 0.02% sodium azide, pH7.3 with 0.5% bovine serum albumin. Aliquot and store at -20C. Minimize freezing and thawing.
Concentration:	lot specific
Purification:	Purified from goat serum by ammonium sulphate precipitation followed by antigen affinity chromatography using the immunizing peptide.
Conjugation:	Unconjugated
Storage:	Store at -20°C as received.
Stability:	Stable for 12 months from date of receipt.
Gene Name:	acid phosphatase, prostate
Database Link:	NP_001090 Entrez Gene 56318 Mouse Entrez Gene 56780 Rat Entrez Gene 485662 Dog Entrez Gene 55 Human P15309
Synonyms:	5 -NT; 5 ¹ -NT; ACP-3; ACP3
Protein Families:	Druggable Genome, Phosphatase, Transmembrane
Protein Pathways:	Riboflavin metabolism



[View online »](#)

Product images:

(0.3ug/ml) staining of Human Prostate lysate (35ug protein in RIPA buffer). Primary incubation was 1 hour. Detected by chemiluminescence.