

Product datasheet for **TA311181**

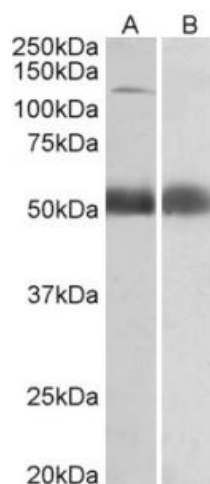
COPA Goat Polyclonal Antibody

Product data:

Product Type:	Primary Antibodies
Applications:	WB
Recommended Dilution:	WB: 0.5-2ug/ml
Reactivity:	Human (Expected from sequence similarity: Mouse, Rat, Cow, Pig)
Host:	Goat
Clonality:	Polyclonal
Immunogen:	Peptide with sequence CTRASNLENST, from the internal region of the protein sequence according to NP_001091868.1; NP_004362.2.
Formulation:	Supplied at 0.5 mg/ml in Tris saline, 0.02% sodium azide, pH7.3 with 0.5% bovine serum albumin. Aliquot and store at -20C. Minimize freezing and thawing.
Concentration:	lot specific
Purification:	Purified from goat serum by ammonium sulphate precipitation followed by antigen affinity chromatography using the immunizing peptide.
Conjugation:	Unconjugated
Storage:	Store at -20°C as received.
Stability:	Stable for 12 months from date of receipt.
Gene Name:	coatomer protein complex subunit alpha
Database Link:	NP_001091868 Entrez Gene 12847 Mouse Entrez Gene 304978 Rat Entrez Gene 1314 Human P53621
Synonyms:	AILJK; HEP-COP



[View online »](#)

Product images:

(0.5ug/ml) staining of Human Prostate lysate (35ug protein in RIPA buffer) with (B) and without (A) blocking with the immunizing peptide. Primary incubation was 1 hour. Detected by chemiluminescence.