

Product datasheet for **TA311178**

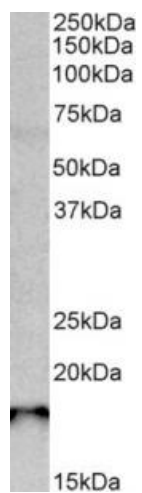
Sap30l Goat Polyclonal Antibody

Product data:

Product Type:	Primary Antibodies
Applications:	WB
Recommended Dilution:	WB: 0.3-1ug/ml
Reactivity:	Rat (Expected from sequence similarity: Human, Mouse, Dog)
Host:	Goat
Clonality:	Polyclonal
Immunogen:	Peptide with sequence C-RLDQKSEGSKQLE, from the C Terminus of the protein sequence according to NP_001074637.1.
Formulation:	Supplied at 0.5 mg/ml in Tris saline, 0.02% sodium azide, pH7.3 with 0.5% bovine serum albumin. Aliquot and store at -20C. Minimize freezing and thawing.
Concentration:	lot specific
Purification:	Purified from goat serum by ammonium sulphate precipitation followed by antigen affinity chromatography using the immunizing peptide.
Conjugation:	Unconjugated
Storage:	Store at -20°C as received.
Stability:	Stable for 12 months from date of receipt.
Gene Name:	SAP30-like
Database Link:	NP_001074637 Entrez Gene 79685 Human Entrez Gene 360531 Rat Entrez Gene 612111 Dog Entrez Gene 50724 Mouse Q5SQF8
Synonyms:	DKFZp667L2214; FLJ11526; FLJ23595; FLJ36497; NS4ATP2; SAP30-like



[View online »](#)

Product images:

(0.3g/ml) staining of Rat Pancreas lysate (35ug protein in RIPA buffer). Primary incubation was 1 hour. Detected by chemiluminescence.