

Product datasheet for **TA311177**

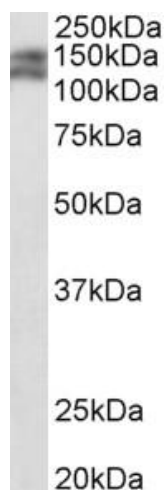
Pard3b Goat Polyclonal Antibody

Product data:

| | |
|-----------------------|---|
| Product Type: | Primary Antibodies |
| Applications: | WB |
| Recommended Dilution: | WB: 0.3-1ug/ml |
| Reactivity: | Mouse (Expected from sequence similarity: Rat) |
| Host: | Goat |
| Clonality: | Polyclonal |
| Immunogen: | Peptide with sequence C-RNQDPRQKNP, from the C-Terminus of the protein sequence according to NP_001074519.2. |
| Formulation: | Supplied at 0.5 mg/ml in Tris saline, 0.02% sodium azide, pH7.3 with 0.5% bovine serum albumin. Aliquot and store at -20C. Minimize freezing and thawing. |
| Concentration: | lot specific |
| Purification: | Purified from goat serum by ammonium sulphate precipitation followed by antigen affinity chromatography using the immunizing peptide. |
| Conjugation: | Unconjugated |
| Storage: | Store at -20°C as received. |
| Stability: | Stable for 12 months from date of receipt. |
| Gene Name: | par-3 family cell polarity regulator beta |
| Database Link: | NP_001074519 Entrez Gene 301455 Rat Entrez Gene 72823 Mouse Q9CSB4 |
| Synonyms: | ALS2CR19; MGC16131; PAR3-beta; PAR3B; PAR3beta; PAR3L; Par3Lb; PAR3LC |



[View online »](#)

Product images:

(0.5ug/ml) staining of Mouse fetal Kidney lysate (35ug protein in RIPA buffer). Primary incubation was 1 hour. Detected by chemiluminescence.