

Product datasheet for **TA311169**

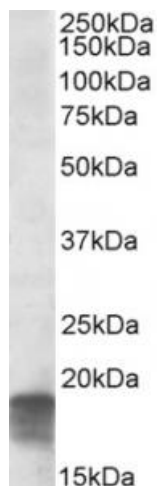
SDHAF1 Goat Polyclonal Antibody

Product data:

Product Type:	Primary Antibodies
Applications:	WB
Recommended Dilution:	WB: 0.3-1ug/ml
Reactivity:	Human (Expected from sequence similarity: Mouse, Dog)
Host:	Goat
Clonality:	Polyclonal
Immunogen:	Peptide with sequence C-HDSTGAPETRPDGR, from the C Terminus of the protein sequence according to NP_001036096.1.
Formulation:	Supplied at 0.5 mg/ml in Tris saline, 0.02% sodium azide, pH7.3 with 0.5% bovine serum albumin. Aliquot and store at -20C. Minimize freezing and thawing.
Concentration:	lot specific
Purification:	Purified from goat serum by ammonium sulphate precipitation followed by antigen affinity chromatography using the immunizing peptide.
Conjugation:	Unconjugated
Storage:	Store at -20°C as received.
Stability:	Stable for 12 months from date of receipt.
Gene Name:	succinate dehydrogenase complex assembly factor 1
Database Link:	NP_001036096 Entrez Gene 68332 Mouse Entrez Gene 484567 Dog Entrez Gene 644096 Human A6NFY7
Synonyms:	LYRM8



[View online »](#)

Product images:

(0.3ug/ml) staining of Human Cerebellum lysate (35ug protein in RIPA buffer). Primary incubation was 1 hour. Detected by chemiluminescence.