

Product datasheet for **TA311167**

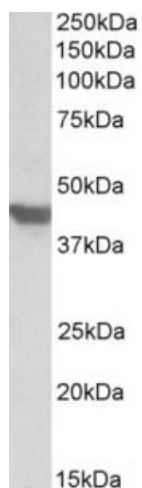
Slc2a4 Goat Polyclonal Antibody

Product data:

Product Type:	Primary Antibodies
Applications:	WB
Recommended Dilution:	WB: 0.3-1ug/ml
Reactivity:	Mouse, Rat (Expected from sequence similarity: Human, Cow, Pig)
Host:	Goat
Clonality:	Polyclonal
Immunogen:	Peptide with sequence C-TELEYLGPDEND, from the C Terminus of the protein sequence according to NP_001033.1.
Formulation:	Supplied at 0.5 mg/ml in Tris saline, 0.02% sodium azide, pH7.3 with 0.5% bovine serum albumin. Aliquot and store at -20C. Minimize freezing and thawing.
Concentration:	lot specific
Purification:	Purified from goat serum by ammonium sulphate precipitation followed by antigen affinity chromatography using the immunizing peptide.
Conjugation:	Unconjugated
Storage:	Store at -20°C as received.
Stability:	Stable for 12 months from date of receipt.
Gene Name:	solute carrier family 2 (facilitated glucose transporter), member 4
Database Link:	NP_033230 Entrez Gene 6517 Human Entrez Gene 25139 Rat Entrez Gene 20528 Mouse P14142
Synonyms:	GLUT-4; GLUT4



[View online »](#)

Product images:

(1ug/ml) staining of Mouse Heart lysate (35ug protein in RIPA buffer). Primary incubation was 1 hour. Detected by chemiluminescence.